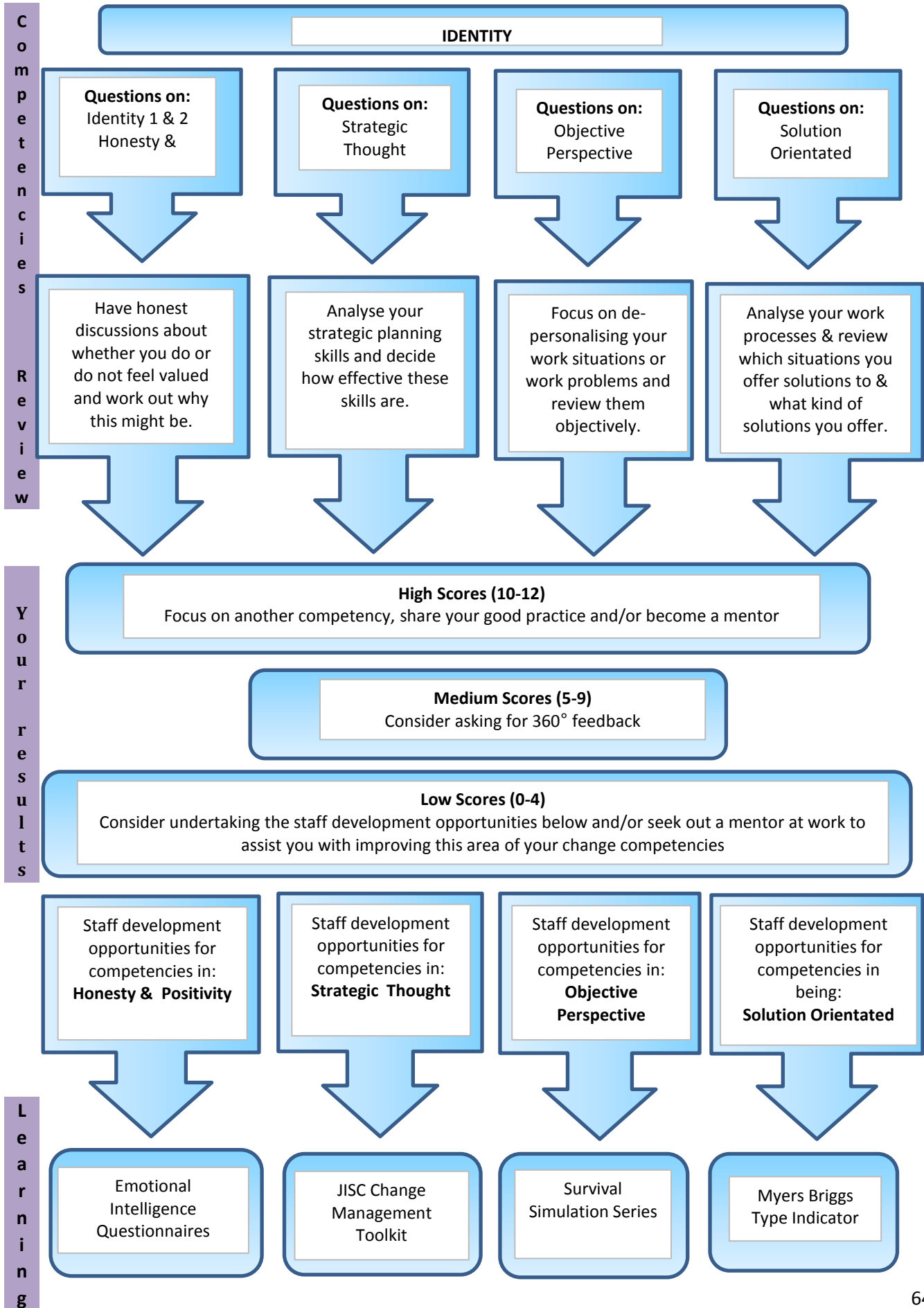


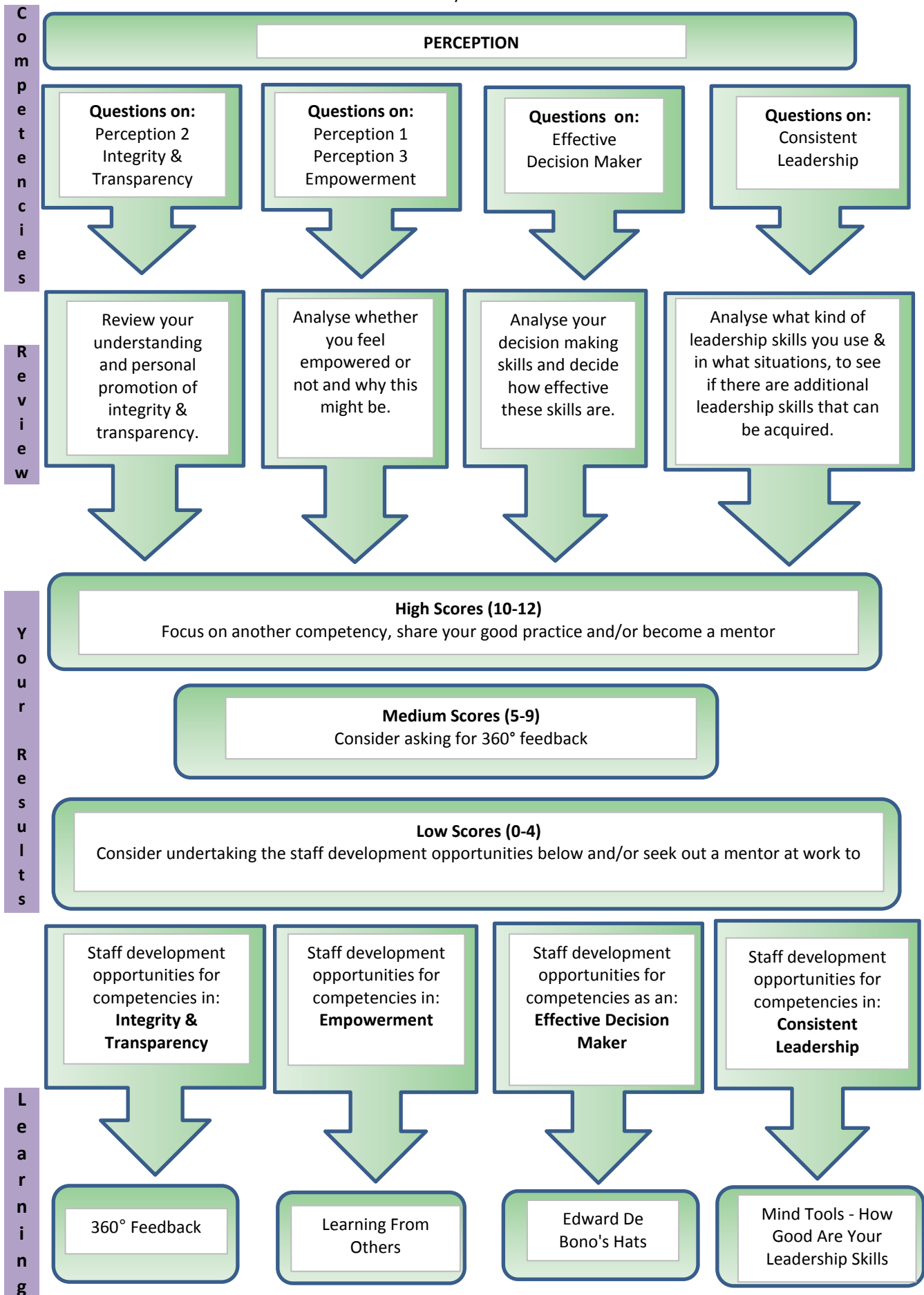
Workbook Questionnaire & Associated Staff Development Opportunities

Once you have completed the workbook questionnaire and decided which change competency you wish to work on, you can follow this grid to help you find the relevant staff development opportunity. Simply follow the arrow(s) downwards until you reach the final **learning** box and this will show you the staff development opportunity you can investigate further. Refer to the Further Learning section of the workbook for more details on the staff development opportunities available to you.



Workbook Questionnaire & Associated Staff Development Opportunities

Once you have completed the workbook questionnaire and decided which change competency you wish to work on, you can follow this grid to help you find the relevant staff development opportunity. Simply follow the arrow(s) downwards until you reach the final **learning** box and this will show you the staff development opportunity you can investigate further. Refer to the Further Learning section of the workbook for more details on the staff development opportunities available to you.



Workbook Questionnaire & Associated Staff Development Opportunities

Once you have completed the workbook questionnaire and decided which change competency you wish to work on, you can follow this grid to help you find the relevant staff development opportunity. Simply follow the arrow(s) downwards until you reach the final **learning** box and this will show you the staff development opportunity you can investigate further. Refer to the Further Learning section of the workbook for more details on the staff development opportunities available to you.

